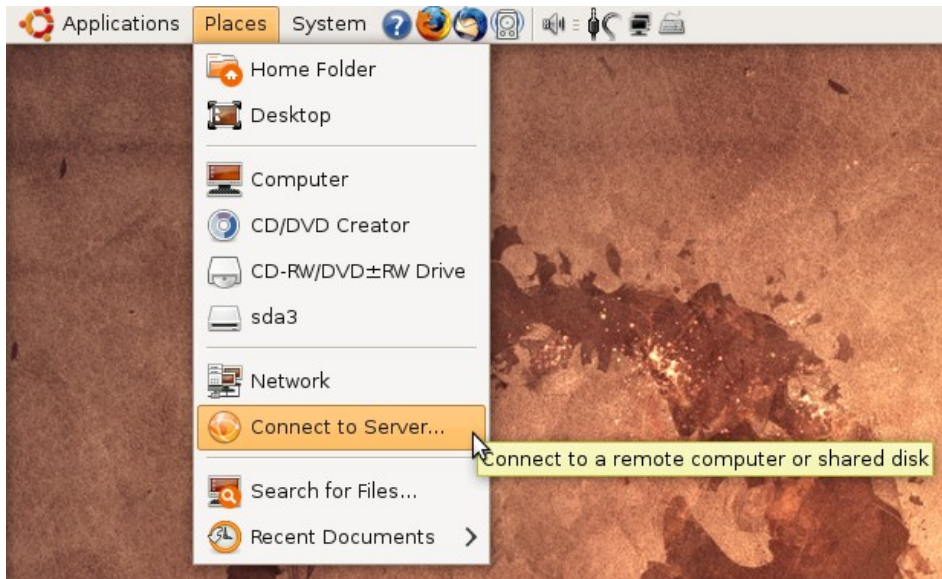


# How to access files stored on turing under Ubuntu Linux



Select Places  
-> Connect to Server

Service type: Windows share

Server: turing.une.edu.au

Optional information:

Share: username

Folder:

User Name: username

Domain Name: UNE

Add bookmark

Bookmark name:

Help Cancel Connect

Beware:

The SMB server of turing demands plaintext passwords

This must be enabled by adding the following lines to /etc/smb.conf [global] section

client plaintext auth = yes  
client lanman auth = Yes

Select Windows Share as the Service Type

Enter turing.une.edu.au as the Server

Enter your UNE username as the Share

Enter your UNE username as the User Name

Enter anything you like as the Domain Name

- this is required but ignored by turing

Click 'Connect' - An icon for the new connection will be displayed on the desktop and in the places menu

Your password will be requested on opening the new connection

Questions and Comments email the Linux User Group: [linux@une.edu.au](mailto:linux@une.edu.au)