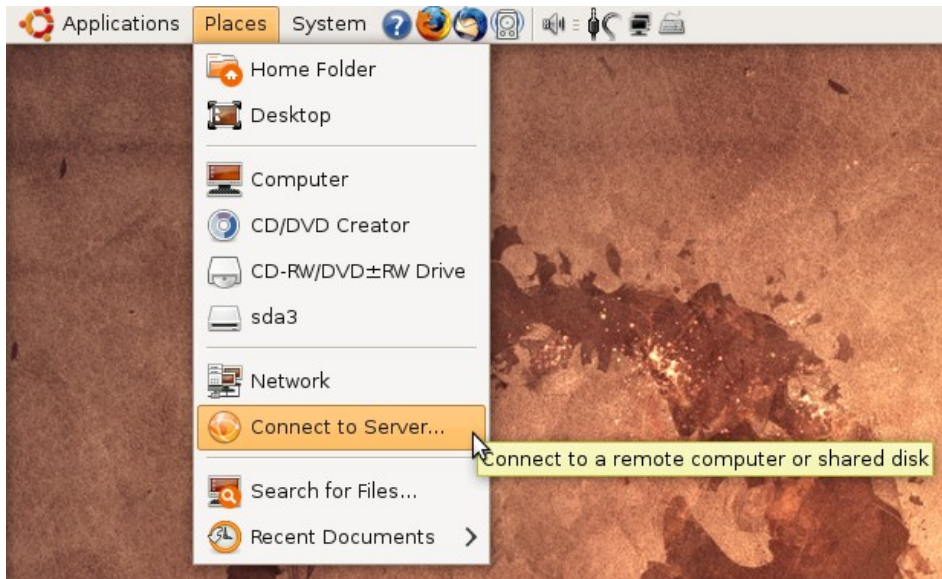


# How to access files stored on turing under Ubuntu Linux



Select Places  
-> Connect to Server

A screenshot of the 'Connect to Server' dialog box in Ubuntu. The 'Service type' dropdown is set to 'SSH'. The 'Server' field contains 'turing.une.edu.au'. Under 'Optional information', the 'Folder' field contains '/home/username' and the 'User Name' field contains 'username'. There is an unchecked checkbox for 'Add bookmark' and an empty 'Bookmark name' field. At the bottom, there are three buttons: 'Help', 'Cancel', and 'Connect'. The 'Connect' button is highlighted with a dashed border.

Select SSH as the Service Type  
Enter turing.une.edu.au as the Server  
Enter /home/username as the folder  
    where 'username' is your UNE username  
Enter your UNE username  
Click 'Connect' - An icon for the new connection will be displayed  
    on the desktop and in the places menu  
Your password will be requested on opening the new connection

Questions and Comments email the Linux User Group: [linux@une.edu.au](mailto:linux@une.edu.au)