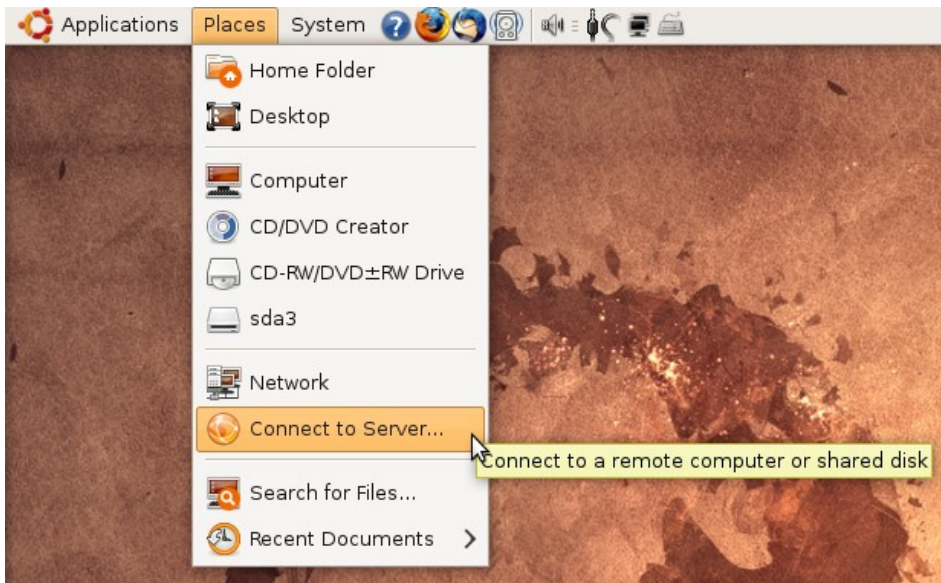


How to access files stored on metz under Ubuntu Linux



Select Places
-> Connect to Server

A screenshot of the 'Connect to Server' dialog box in Ubuntu Linux. The 'Service type' dropdown is set to 'SSH'. The 'Server' field contains 'metz.une.edu.au'. Under 'Optional information', the 'Folder' field contains '/user/username' and the 'User Name' field contains 'username'. There is an unchecked checkbox for 'Add bookmark' and an empty 'Bookmark name' field. At the bottom, there are three buttons: 'Help', 'Cancel', and 'Connect'. The 'Connect' button is highlighted with a dashed border.

Select SSH as the Service Type

Enter metz.une.edu.au as the Server

Enter /user/username as the folder

where 'username' is your UNE user name

Enter your UNE username as the User Name

Click 'Connect'. An icon for the new connection will be displayed

on the desktop and in the places menu

Your password will be requested on opening the new connection

Questions and Comments email the Linux User Group: linux@une.edu.au