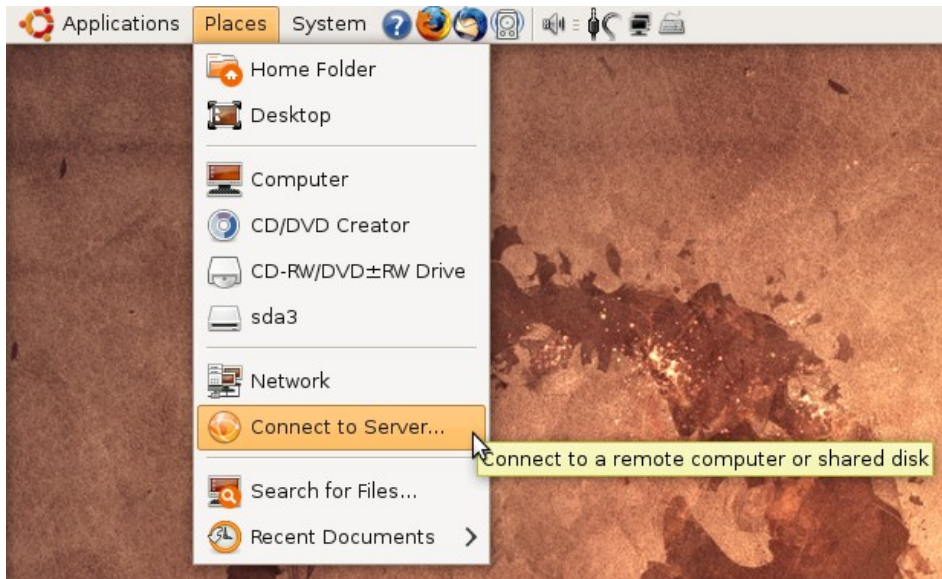


# How to access files stored on barney under Ubuntu Linux



Select Places  
-> Connect to Server

A screenshot of the 'Connect to Server' dialog box in Ubuntu Linux. The 'Service type' is set to 'Windows share'. The 'Server' field contains 'barney.une.edu.au'. The 'Optional information' section includes 'Share' (users), 'Folder' (username), 'User Name' (username), and 'Domain Name' (UNE). There are buttons for 'Help', 'Cancel', and 'Connect'.

Note:

This share can only be accessed inside the UNE network as smb communications are blocked by the outbound firewall

Externals:  
(See thin-client howto)

Select Windows Share as the Service Type

Enter barney.une.edu.au as the Server

Enter users as the Share

Enter your UNE username as the Folder

Enter your UNE username as the User Name

Enter UNE as the Domain Name

Click 'Connect' - An icon for the new connection will be displayed on the desktop and in the places menu

Your password will be requested on opening the new connection

Questions and Comments email the Linux User Group: [linux@une.edu.au](mailto:linux@une.edu.au)