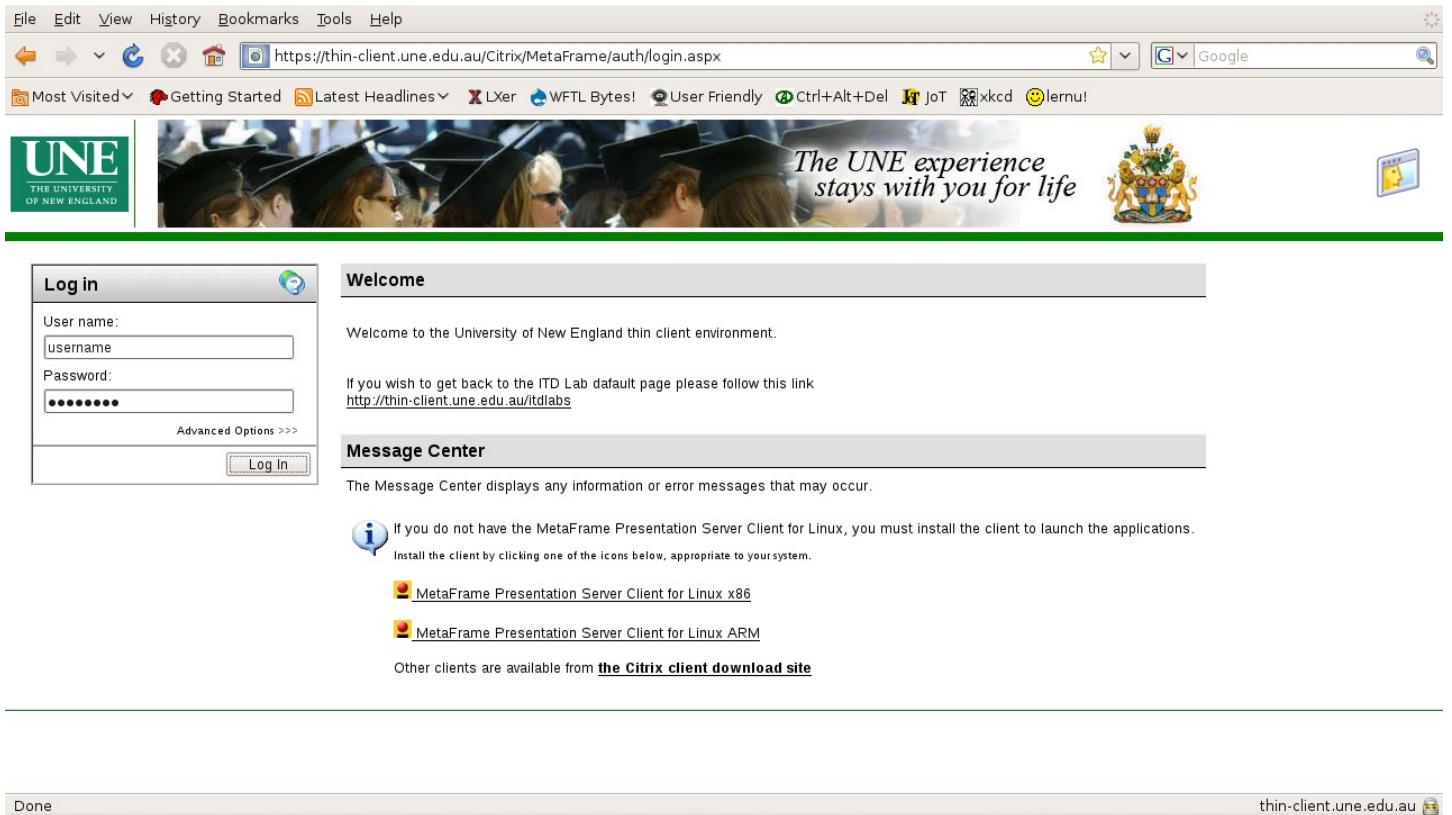


# How to use the UNE Windows 2000 Terminal Server 'thin-client' using any Sun Microsystems Java-enabled web browser (1/4)



Download and install the Sun Java plugin for your web browser (<http://www.sun.com>)

Start the web browser

Enter <https://thin-client.une.edu.au> into the address bar (Beware: do not enter <http://thin-client.une.edu.au>)

You will be redirected to:

<https://thin-client.une.edu.au/Citrix/MetaFrame/auth/login.aspx>

Enter your UNE username and password

Click 'Log In'

Questions and Comments email the Linux User Group: [linux@une.edu.au](mailto:linux@une.edu.au)

# How to use the UNE Windows 2000 Terminal Server 'thin-client' using any Sun Microsystems Java-enabled web browser (2/4)

The screenshot shows a web browser window with the URL <https://thin-client.une.edu.au/Citrix/MetaFrame/site/default.aspx>. The page features the UNE logo and the tagline "The UNE experience stays with you for life". On the left, there is an "Applications" panel with "Dev" and "Student Desktop" icons, and buttons for "Reconnect", "Disconnect", and "Log Off". The main content area has a "Welcome" message and a "Message Center" section. The Message Center contains information about existing applications and links to download the MetaFrame Presentation Server Client for Linux x86 and Linux ARM.

Click 'Student Desktop'

The application's digital signature has an error. Do you want to run the application?



Accept the digital signature (Click Run)

The dialog box displays the following information:  
**Name:** javaclient  
**Publisher:** Citrix Systems, Inc.  
**From:** http://thin-client  
 Always trust content from this publisher.  
Buttons: Run, Cancel  
Warning icon: The digital signature was generated with a trusted certificate but has expired. [More Information...](#)

Click 'OK' for both boxes that tell you that your profile cannot be created

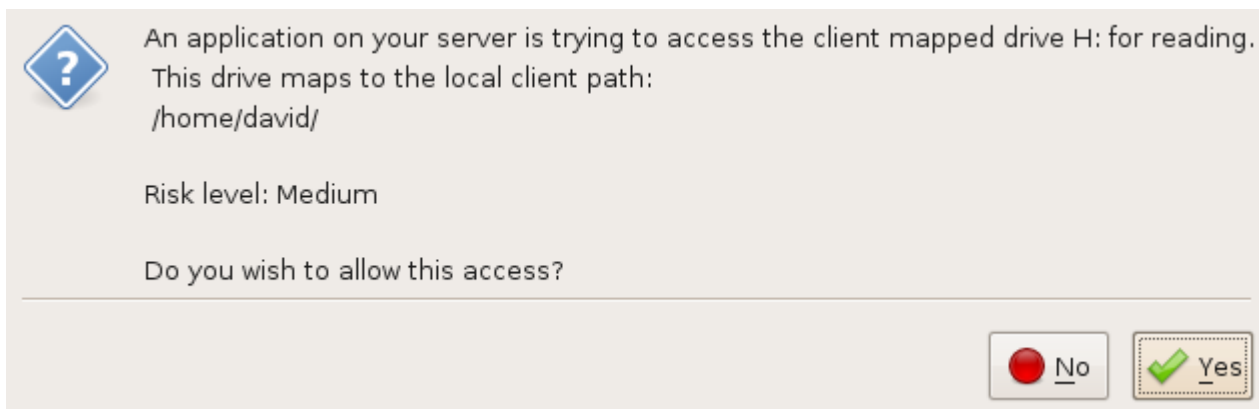
The two screenshots show identical error messages in a Windows dialog box titled "User Environment". The message text is: "Windows cannot create profile directory dgeary2.pds. You will be logged on with a local profile only. Changes to the profile will not be propagated to the server. Contact your network administrator. DETAIL - Access is denied." Each dialog box has an "OK" button and a "Time remaining: 15" indicator at the bottom.

Questions and Comments email the Linux User Group: [linux@une.edu.au](mailto:linux@une.edu.au)

## How to use the UNE Windows 2000 Terminal Server 'thin-client' using any Sun Microsystems Java-enabled web browser (3/4)

The thin client is usable at this point, however you will only be able to access your folder on the Windows 2003 file server 'barney' for storage

Read on to learn how to access these for storage as well:  
your home folder on the client  
your home folder on the Unix server 'metz'  
your home folder on the Linux server 'turing'



Click 'Yes' to access your home folder on the client



To access your home folder on 'metz'

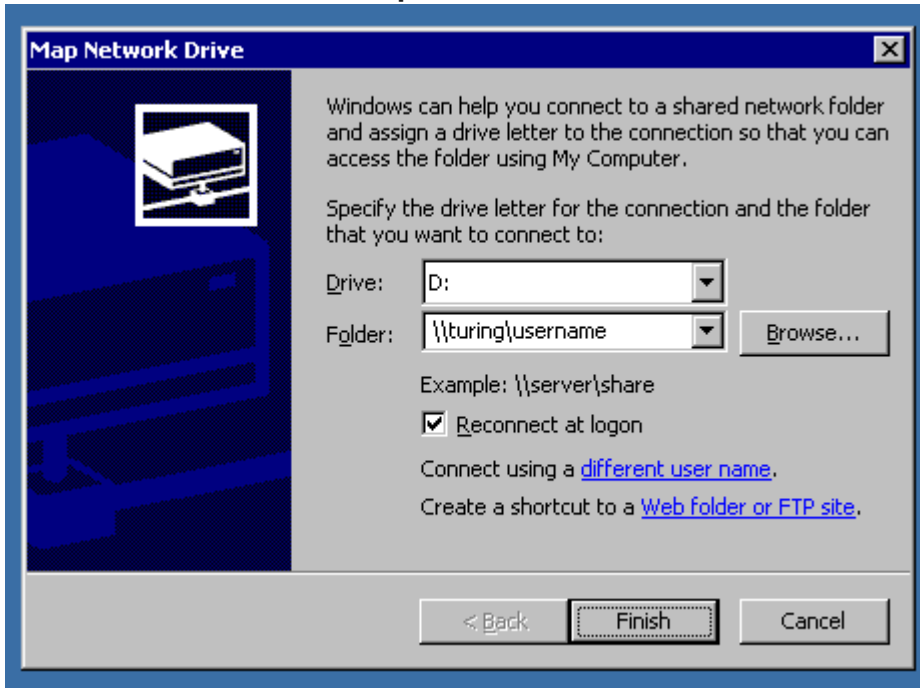
Enter your UNE username

Enter your UNE password

Click Connect

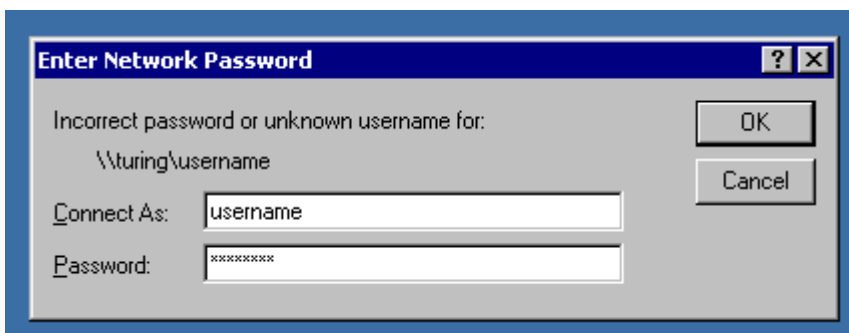
# How to use the UNE Windows 2000 Terminal Server 'thin-client' using any Sun Microsystems Java-enabled web browser (4/4)

To access 'turing':  
Open My Computer  
Click Tools -> Map Network Drive



Enter `\\turing\` followed by your UNE username for the Folder  
Click 'Finish'

It will declare your username and password as incorrect



Enter your UNE username and password  
Click 'OK'