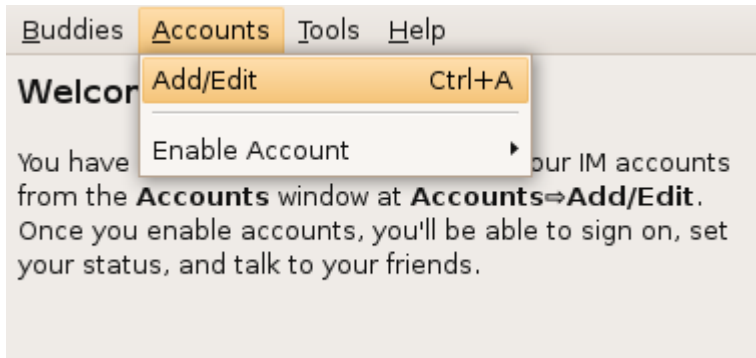


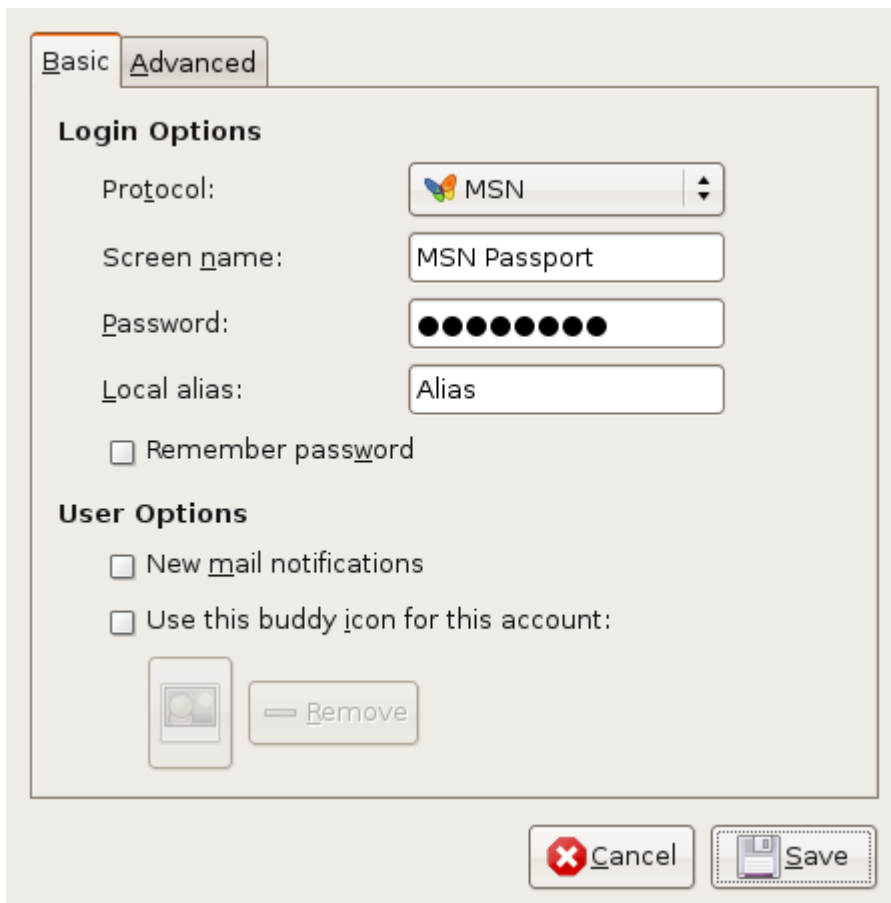
How to set up Pidgin to use MSN through the UNE Proxy (1/2)



Select Accounts -> Add/Edit



Select Add



Select MSN as the Protocol

Enter your MSN Passport into the Screen name field

Enter your MSN Passport password into the Password field

Enter an alias into the Local alias field. This will identify you in your conversation windows

How to set up Pidgin to use MSN through the UNE Proxy (2/2)

The screenshot shows the 'Advanced' tab of the Pidgin MSN Options dialog. Under 'MSN Options', the 'Server' is 'messenger.hotmail.com', 'Port' is '1863', and the 'Use HTTP Method' checkbox is checked. The 'HTTP Method Server' is 'gateway.messenger.hot'. Under 'Proxy Options', the 'Proxy type' is set to 'HTTP', 'Host' is 'proxy.une.edu.au', 'Port' is '8080', 'Username' is 'username', and 'Password' is masked with dots. 'Cancel' and 'Save' buttons are at the bottom.

Check the 'Use HTTP Method' box

Select 'HTTP' as the Proxy type

Enter proxy.une.edu.au as the Host

Enter 8080 as the Port

Enter your UNE username as the Username

Enter your UNE password as the Password